

Rapid Finisher 2

Operations Manual



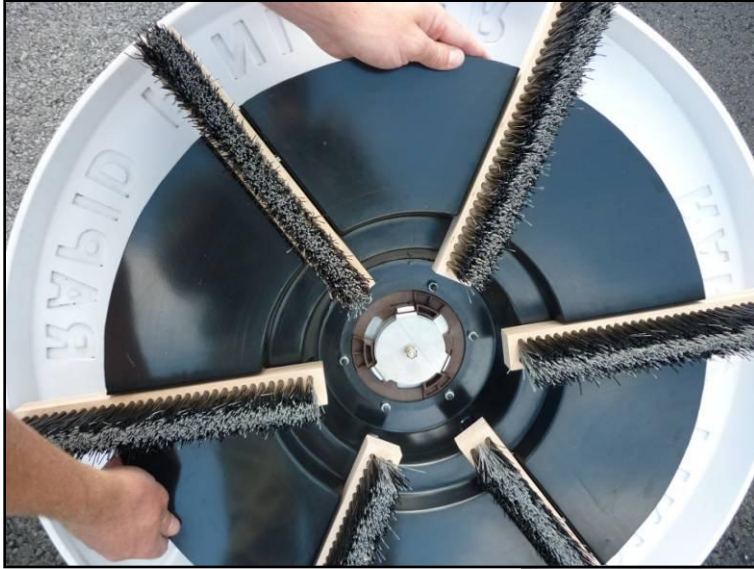
Contents

1. Introduction
2. Safety
3. Parts List
4. Specifications & Dimensions
5. Storage Case
6. Preparing for Work
7. Operating Procedure
8. Cleanup
9. Parts List
10. Service



Introduction

The Rapid Finisher 2 is designed for the application of asphalt coatings. This electrically powered brush will enable the applicator to apply coatings to large projects quickly and efficiently reducing both time and labor costs.



This fast and easy machine works in a similar manner to a floor polisher, with a multi-brush Cartridge that effortlessly works the coatings into the asphalt surface at variable speeds up to 70 rpm. Each brush Cartridge has a usable life of 5,000 ft² (500 m²) or more, and the brushes are easily replaceable.



Safety



Ensure that everyone who operates this machine has read and understood this manual.

Danger Electric Shock!



- △ Never operate machine without the Ground Fault Interrupt (GFI) in line. Failure to do so could result in death from electric shock
- △ Never immerse electrical components in water. Follow the cleaning instructions in this manual carefully
- △ Regularly check to ensure that no electrical wires are worn and exposed. Replace or repair before use
- △ Always unplug the machine when making any repairs or when accessing the electrical components

Danger! Moving Parts – the Brush Cartridge turns with enough force to cause serious injury.

- △ Always unplug the machine before changing the Brush Cartridge
- △ Keep fingers, feet and loose clothing away from the brushes when in operation
- △ Always keep a firm grip on the handle when operating or it could swing out of your hands and cause injury or damage
- △ Never mechanically hold the throttle open. The throttle is designed to shut off the moment the operator lets go. If the throttle remains open the machine could cause serious injury and property damage

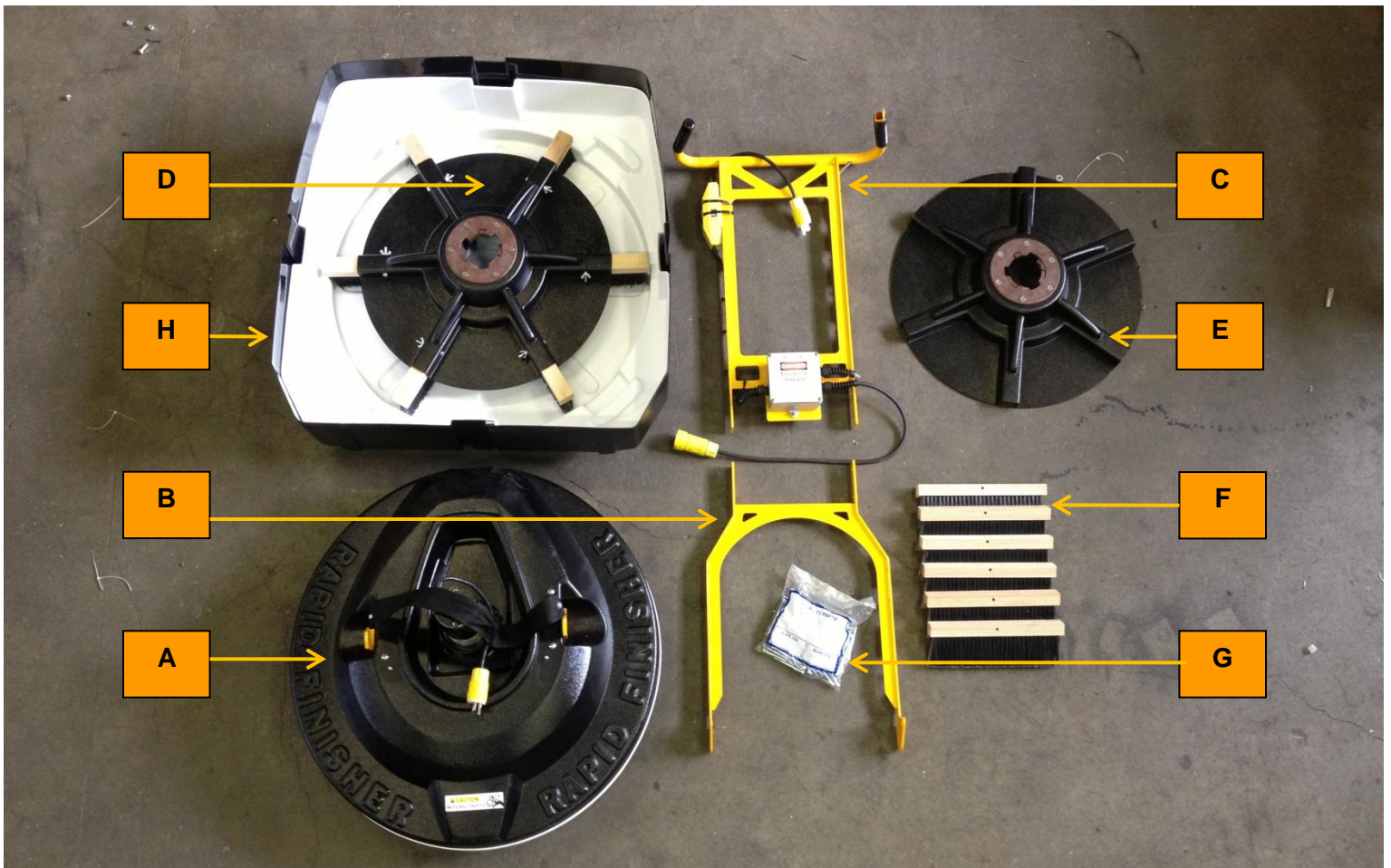
Caution Hot! – the motor can become quite hot, even exceeding the temperature of boiling water!

Safety Wear – To avoid injury, always wear safety glasses, ear protection, long pants and steel toed boots and gloves when operating this equipment.



Parts List

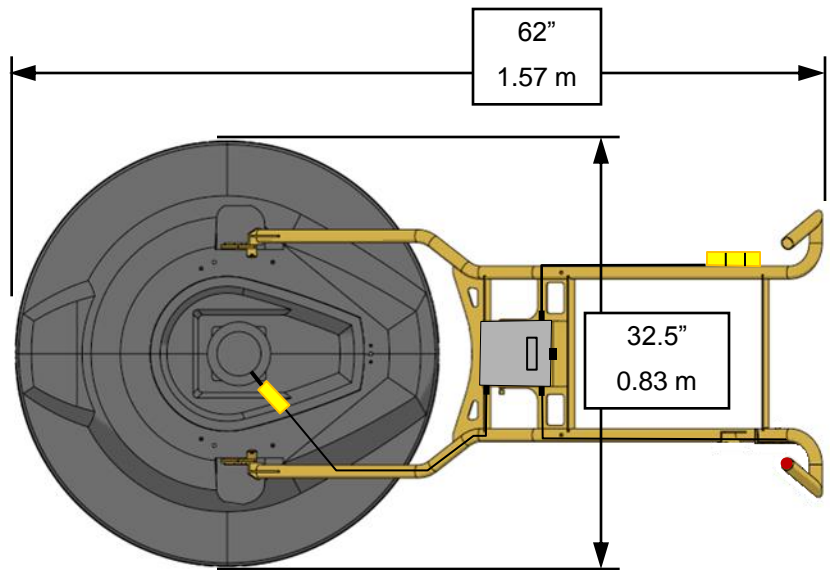
- A. Main Body and Motor Assembly with 2 replaceable liners
- B. Lower Handle
- C. Upper Handle Assembly
- D. Brush Cartridge Assembly with brushes
- E. Spare Brush Cartridge
- F. Spare Brushes (6 pieces)
- G. Brush mounting hardware
- H. Lower Case Assembly with 2 replaceable liners



Specifications and Dimensions

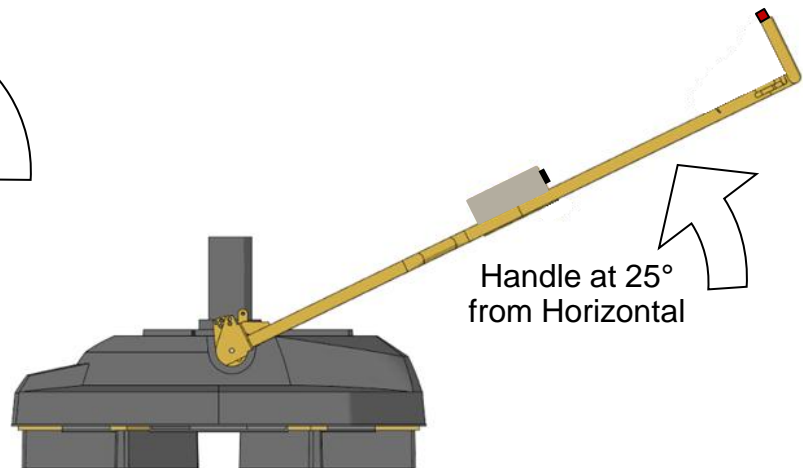
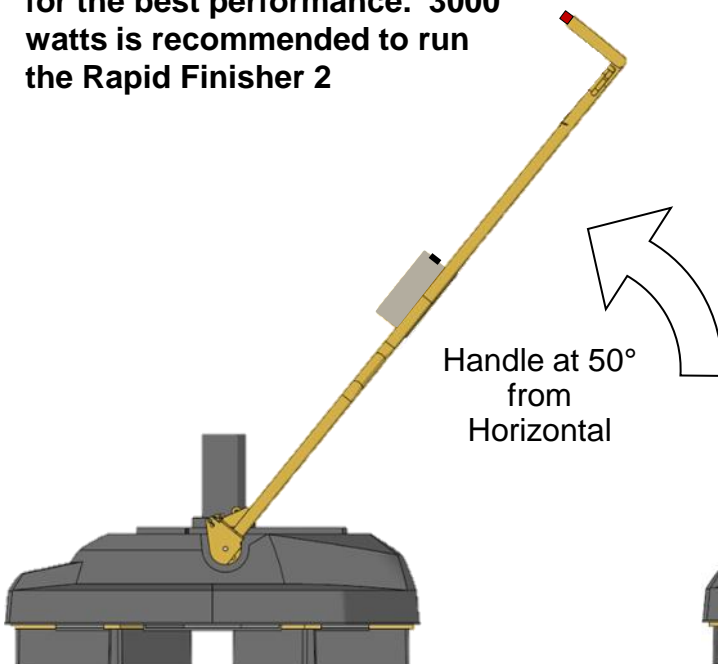
Rapid Finisher 2 Specifications

Machine Weight (Not including Case)	lbs (kg)
Source Electrical Power	110 or 220 VAC
Electric Gear Motor	¼ HP (186 Watts) Gear Ratio 40:1
Motor Voltage	Up to 110 VDC
Electric Current	2.5 Amps Max. at 110 VAC
Brush Cartridge Speed	0 – 76 RPM



Generator: Use Honda inverter type generators only for the best performance. 3000 watts is recommended to run the Rapid Finisher 2

Locking Handle is adjustable in height from 25° to 50° from horizontal in 5° increments



Preparing for Work



Preventing Coating Buildup

Using a bond breaker on the lower and upper surfaces of the main body can extend the life of your machine, as coating buildup on the motor will prevent proper cooling

Use WD40 or cooking oil spray to lightly coat the upper and lower surfaces. **WARNING:** don't use a heavy coat or allow drips because your coating job may be compromised if the bond breaker is allowed to mix with the coatings. Use a cloth to wipe up all excess oil.

Make sure that the motor has a bond breaker applied.



Preparing for Work – Cont'd

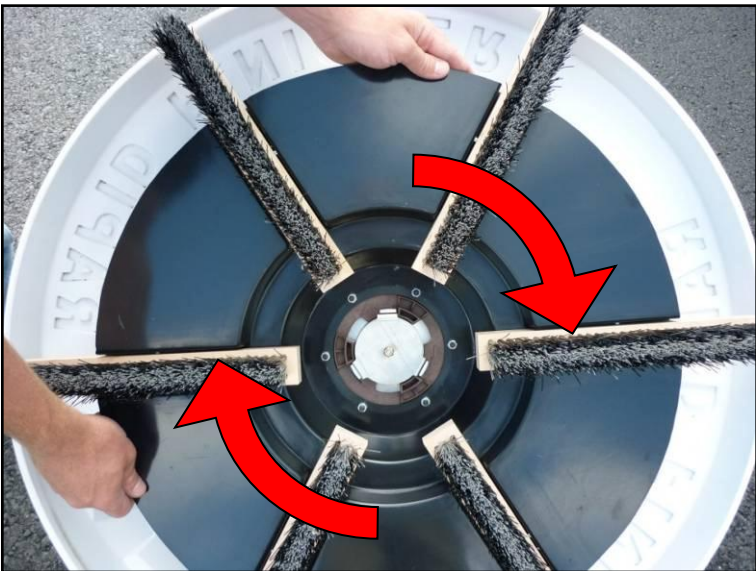
Attaching and Locking the Brush Cartridge



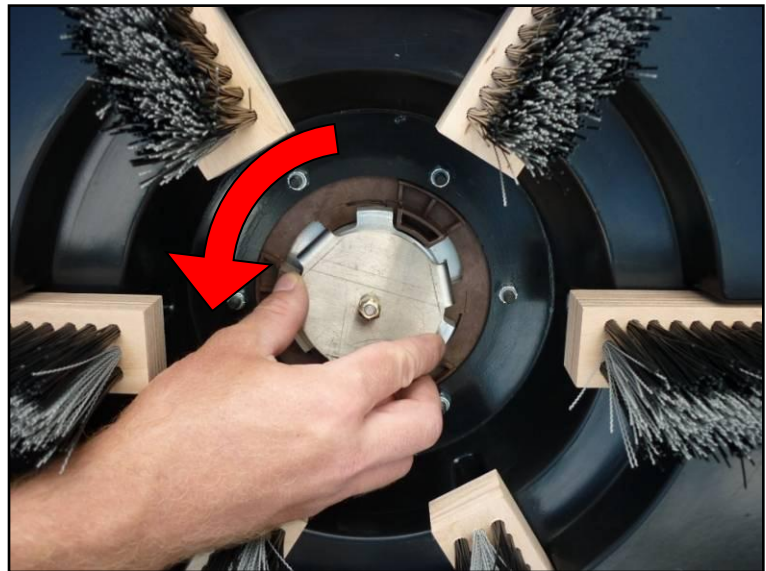
First, make sure the “legs” on the Cartridge Lock are aligned with the three protrusions on the Aluminum Clutch



Place the Brush Cartridge onto the Aluminum Clutch



Rotate the Cartridge clockwise with a sharp motion to seat the Cartridge onto the Clutch



Rotate the Cartridge Lock counterclockwise to lock the Cartridge onto the Clutch.
IMPORTANT: to prevent damage to the Cartridge, always make sure the Cartridge Lock is properly positioned

Preparing for Work – Cont'd

Attach Lower Handle

Remove the Lobed Hand Wheel fasteners and Ball Lock Pins and place the lower handle in position



Secure and tighten the handle with the Lobed Hand Wheel fasteners...



use the Ball Lock Pins to select the desired handle height



By using both the upper and lower holes for the Ball Lock Pins the handle angle can be adjusted in 5° increments

Operating Procedure

Throttle Control



Make sure you are holding both handles securely before pushing the throttle button.



To adjust the rotation speed of the brushes simply adjust the dial on the control box.

Operating Procedure – Cont'd

Directional Control

Let the machine do the work for you. Depending on how you manipulate the handle, the machine will move in different directions



LIFT the handle and the machine will move to the RIGHT. NOTE: use moderate movements.



LOWER the handle and the machine will move to the LEFT.



TWIST THE HANDLE TO THE LEFT and the machine will move BACKWARDS.



TWIST THE HANDLE TO THE RIGHT and the machine will move FORWARDS.

Cleanup

Cleaning the Rapid Finisher 2



Put about 1 – 2 inches (25 – 50 mm) of water into the Lower Case that has the Liner/s



Lower the machine into the water and run the brushes at a slow speed until the brushes are clean

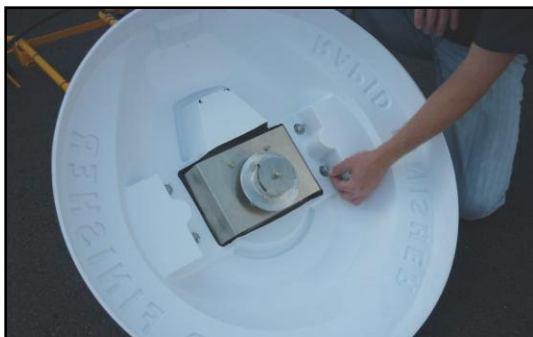
To extend the life of the brushes place the Rapid Finisher 2 in water when it is not being used.



The motor can be washed with standard hose pressure. **CAUTION: ALWAYS UNPLUG THE MACHINE FROM THE GENERATOR FIRST.** Never use a pressure washer



CAUTION: NEVER SPRAY OR IMMERSE THE ELECTRICAL BOX ON THE HANDLE . USE A DAMP CLOTH TO WIPE IT DOWN INSTEAD



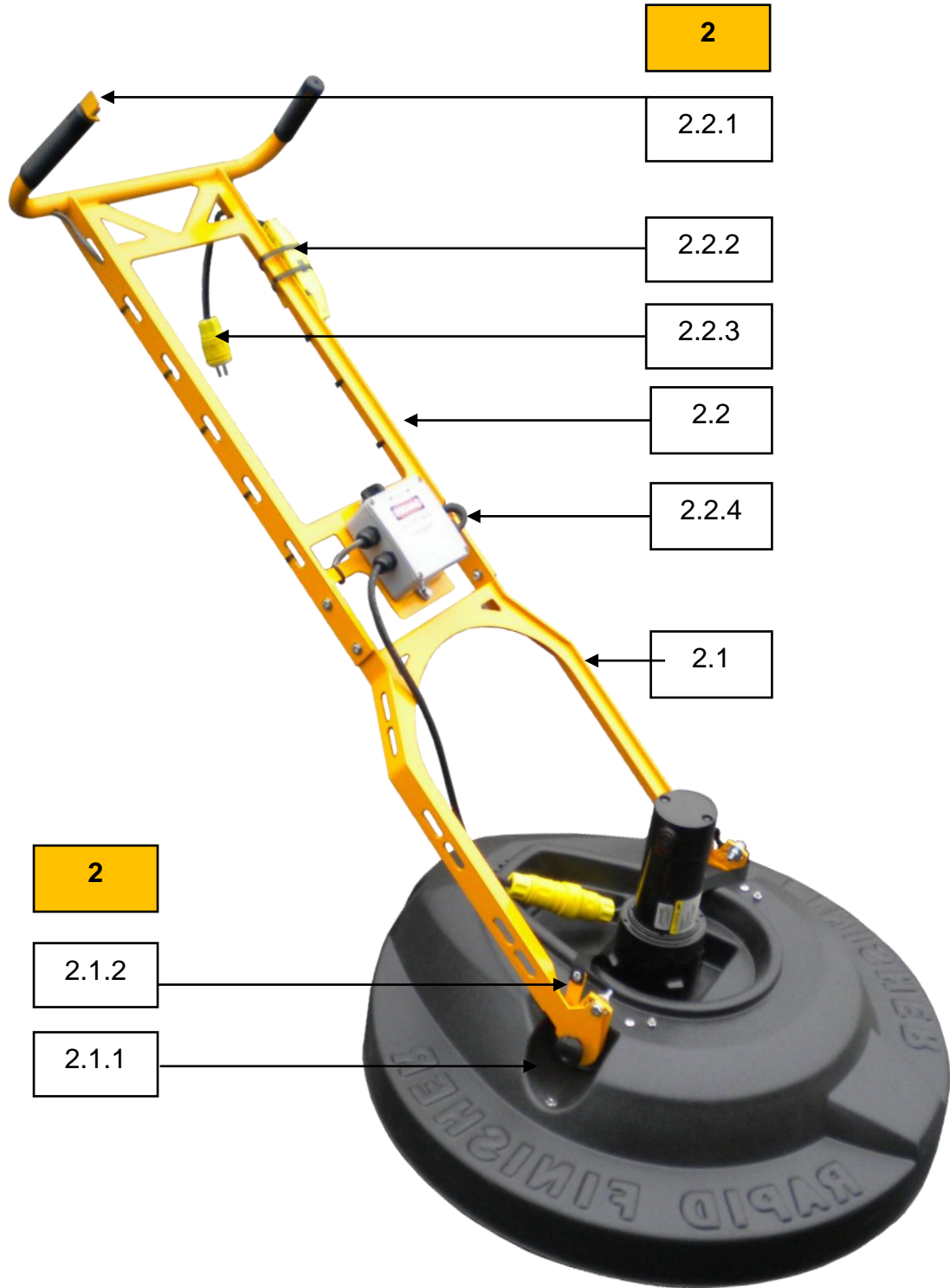
If the Liners need to be replaced a liner kit (part number 80-0-403A), that contains 2 Base Liners and 2 Case Liners, is available from Integrated Paving Concepts. The Base Liner is secured by 4 wing nuts and large washers on the underside.

Parts List

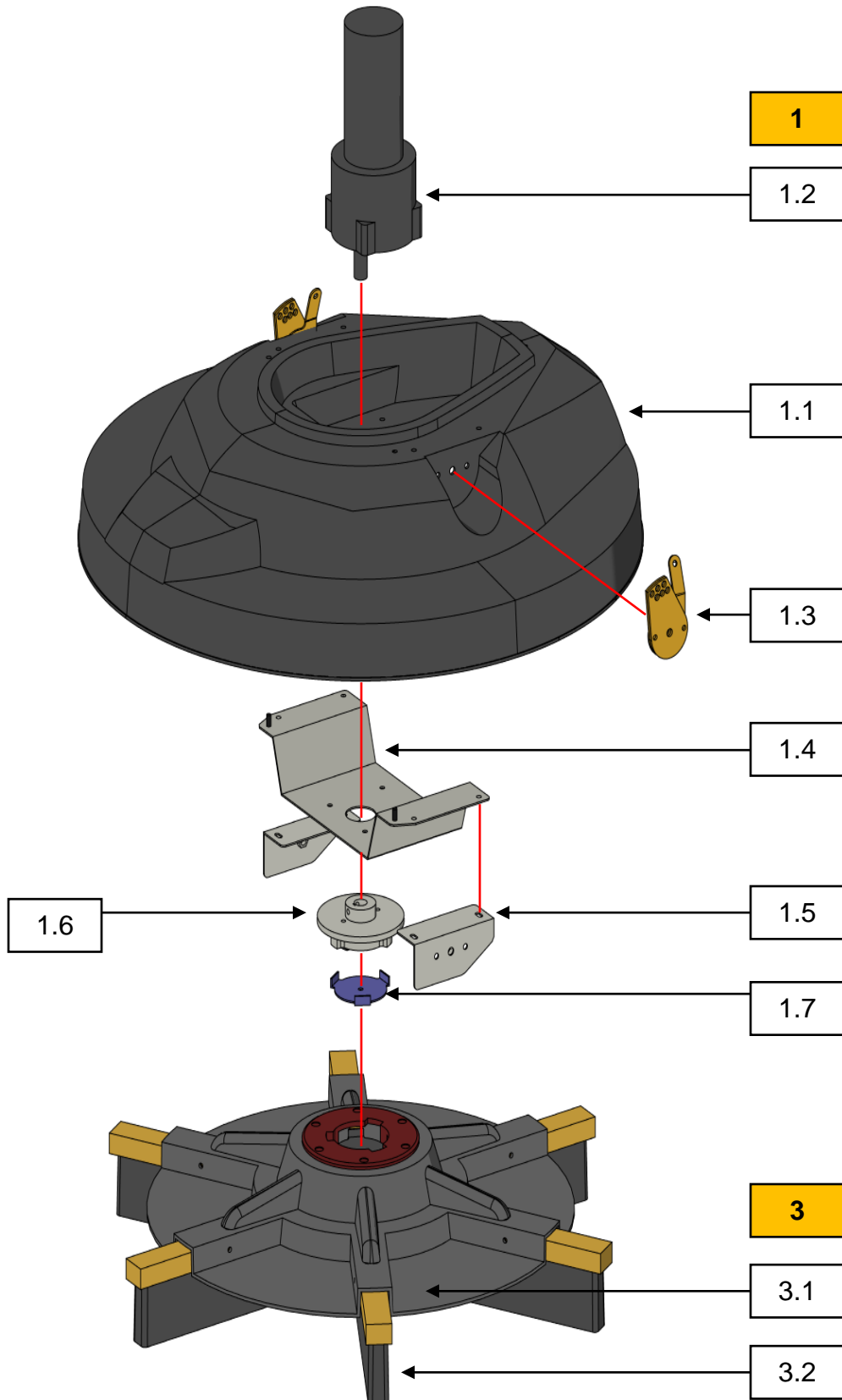
(See the Following Page for Illustrations)

REF	DESCRIPTION	QTY	PART NUMBER
1	RF2 Main Body Asbly	1	80-0-400E1
1.1	RF2 Main Body ABS	1	80-0-40002
1.2	DC Gear Motor	1	EC-0-0-034
1.3	RF2 Handle Receiver	2	n/a
1.4	RF2 Bridge Bracket	1	n/a
1.5	RF2 Handle Backing Bracket	2	n/a
1.6	RF2 Aluminum Clutch	1	80-0-40094
1.7	RF2 Brush Cartridge Lock Bracket	1	n/a
1.8	RF2 Brush Cartridge Lock Spring	1	MC-0-0-109
2	RF2 Handle Asbly	1	80-0-400E2
2.1	RF2 Lower Handle	1	n/a
2.1.1	3/8" Lobe Hand Wheel Fastener	2	MC-0-0-280
2.1.2	5/16" Ball Lock Pin	2	MC-0-0-271
2.2	RF2 Upper Handle Asbly	1	n/a
2.2.1	Red Start/Stop Button	1	n/a
2.2.2	RF2 Ground Fault Interrupt (GFI)	1	80-0-40011
2.2.3	Male power connection	1	n/a
2.2.4	Brush rotation control box		n/a
3	RF/RF2 Brush Cartridge Asbly	2	80-0-401
3.1	RF/RF2 Brush Cartridge with Clutch	2	80-0-40061
3.2	RF/RF2 Brushes (come in pack of 24)	12	80-0-410

Parts List - Illustrations



Parts List – Illustrations (cont'd)



Service

Integrated Paving Concepts Inc. is committed to providing the best possible after-market service. If you require parts, warranty information or service please visit our website at:

www.streetprint.com

Or call our Technical Assistance line:

1-800-688-5652